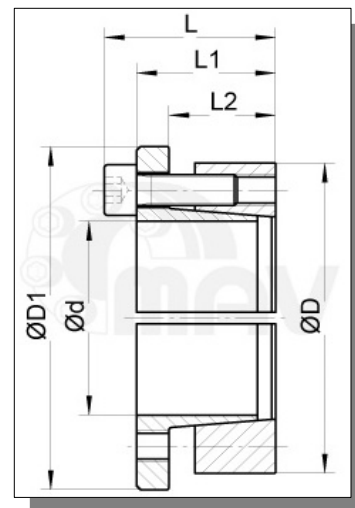


MAV1061 Locking Assembly - for imperial shaft



Characteristics:

- flange design
- self locking
- self centering
- screws UNI 5931 (DIN912)



Example of order: MAV1061 47,63 x 80 (d x D)

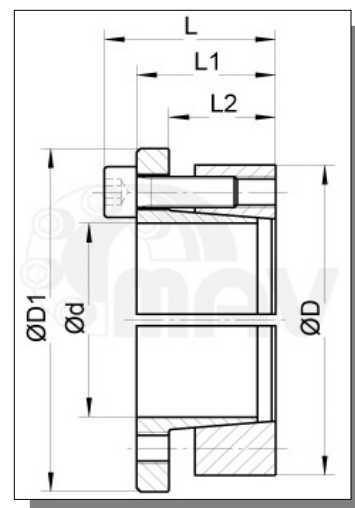
dimensions								screws		transmissible torque	transmissible axial load	contact pressure on shaft	contact pressure in hub
d x D mm	d inch	d mm	D mm	L2 mm	L1 mm	L mm	D1 mm	size	Ma Nm	Mt Nm	Fax kN	Ps N/mm ²	Ph N/mm ²
19,05 x 47	3/4"	19,05	47	22,5	28,5	34,5	52,0	M 6	17	270	28	228	92
22,23 x 47	7/8"	22,23	47	22,5	28,5	34,5	52,0	M 6	17	310	28	195	92
25,40 x 50	1"	25,40	50	22,5	28,5	34,5	56,5	M 6	17	420	33	205	104
28,58 x 55	1 1/8"	28,58	55	22,5	28,5	34,5	61,5	M 6	17	480	33	182	95
30,16 x 55	1 3/16"	30,16	55	22,5	28,5	34,5	61,5	M 6	17	500	33	173	95
31,75 x 60	1 1/4"	31,75	60	22,5	28,5	34,5	66,5	M 6	17	710	45	219	116
34,93 x 60	1 3/8"	34,93	60	22,5	28,5	34,5	66,5	M 6	17	780	45	199	116
36,51 x 65	1 7/16"	36,51	65	22,5	28,5	34,5	71,5	M 6	17	810	45	190	107
38,10 x 65	1 1/2"	38,10	65	22,5	28,5	34,5	71,5	M 6	17	850	45	182	107
41,28 x 75	1 5/8"	41,28	75	26,5	34,5	42,5	83,5	M 8	41	1490	72	231	127
42,86 x 75	1 11/16"	42,86	75	26,5	34,5	42,5	83,5	M 8	41	1540	72	223	127
44,45 x 75	1 3/4"	44,45	75	26,5	34,5	42,5	83,5	M 8	41	1600	72	215	127
47,63 x 80	1 7/8"	47,63	80	26,5	34,5	42,5	88,5	M 8	41	1720	72	201	119
49,21 x 80	1 15/16"	49,21	80	26,5	34,5	42,5	88,5	M 8	41	1770	72	194	119
50,80 x 80	2"	50,80	80	26,5	34,5	42,5	88,5	M 8	41	1830	72	188	119
53,98 x 85	2 1/8"	53,98	85	26,5	34,5	42,5	93,5	M 8	41	2220	82	202	128
55,56 x 85	2 3/16"	55,56	85	26,5	34,5	42,5	93,5	M 8	41	2290	82	196	128
57,15 x 90	2 1/4"	57,15	90	26,5	34,5	42,5	99,0	M 8	41	2350	82	191	121
60,33 x 90	2 3/8"	60,33	90	26,5	34,5	42,5	99,0	M 8	41	2480	82	181	121
61,91 x 95	2 7/16"	61,91	95	26,5	34,5	42,5	104,0	M 8	41	2870	93	198	129
63,50 x 95	2 1/2"	63,50	95	26,5	34,5	42,5	104,0	M 8	41	2940	93	193	129
65,09 x 95	2 9/16"	65,09	95	26,5	34,5	42,5	104,0	M 8	41	3010	93	189	129
68,26 x 110	2 11/16"	68,26	110	30,5	40,5	50,5	119,0	M 10	83	4610	135	219	136
69,85 x 110	2 3/4"	69,85	110	30,5	40,5	50,5	119,0	M 10	83	4720	135	214	136
73,02 x 115	2 7/8"	73,02	115	30,5	40,5	50,5	124,0	M 10	83	4930	135	205	130
74,61 x 115	2 15/16"	74,61	115	30,5	40,5	50,5	124,0	M 10	83	5040	135	200	130
76,20 x 120	3"	76,20	120	30,5	40,5	50,5	129,0	M 10	83	5150	135	196	124
82,55 x 125	3 1/4"	82,55	125	30,5	40,5	50,5	134,0	M 10	83	6270	152	204	134
85,72 x 125	3 3/8"	85,72	125	30,5	40,5	50,5	134,0	M 10	83	6520	152	196	134
87,31 x 130	3 7/16"	87,31	130	30,5	40,5	50,5	139,0	M 10	83	6640	152	192	129
88,90 x 130	3 1/2"	88,90	130	30,5	40,5	50,5	139,0	M 10	83	6760	152	189	129
95,25 x 135	3 3/4"	95,25	135	30,5	40,5	50,5	144,0	M 10	83	8040	169	196	138
100,01 x 145	3 15/16"	100,01	145	33,0	45,0	57,0	154,0	M 12	145	10100	202	206	142
101,06 x 145	4"	101,06	145	33,0	45,0	57,0	154,0	M 12	145	10200	202	204	142
112,71 x 155	4 7/16"	112,71	155	33,0	45,0	57,0	164,0	M 12	145	11400	202	183	133
120,65 x 165	4 3/4"	120,65	165	33,0	45,0	57,0	174,0	M 12	145	13700	227	192	140
125,41 x 180	4 15/16"	125,41	180	41,0	55,0	69,0	189,0	M 14	230	19100	305	190	132
138,11 x 190	5 7/16"	138,11	190	41,0	55,0	69,0	199,0	M 14	230	21100	305	172	125
150,81 x 200	5 15/16"	150,81	200	41,0	55,0	69,0	209,0	M 14	230	25600	339	176	132
163,51 x 225	6 7/16"	163,51	225	51,0	65,0	79,0	234,0	M 14	230	33300	407	150	109

MAV1061 Locking Assembly - for imperial shaft



Characteristics:

- flange design
- self locking
- self centering
- screws UNI 5931 (DIN912)



Example of order: MAV1061 47,63 x 80 (d x D)

dimensions								screws		transmissible torque	transmissible axial load	contact pressure on shaft	contact pressure in hub
d x D mm	d inch	d mm	D mm	L2 mm	L1 mm	L mm	D1 mm	size	Ma Nm	Mt Nm	Fax kN	Ps N/mm ²	Ph N/mm ²
176,21 x 235	6 15/16"	176,21	235	51,0	65,0	79,0	244,0	M 14	230	35900	407	139	104
177,80 x 235	7"	177,80	235	51,0	65,0	79,0	244,0	M 14	230	36200	407	138	104
188,91 x 250	7 7/16"	188,91	250	51,0	65,0	79,0	259,0	M 14	230	48100	509	162	123
201,61 x 260	7 15/16"	201,61	260	51,0	65,0	79,0	269,0	M 14	230	51300	509	152	118
203,20 x 260	8"	203,20	260	51,0	65,0	79,0	269,0	M 14	230	51700	509	151	118

Information subject to change without prior notification



We are specialized in customized solutions.

All Locking Devices are available in different dimensions and materials. Please contact us for detailed information.